

UV Galvo Assembly

1. To assemble your new UV Galvo you will need these items.

Hardware:

M8x16 Button Head Screws:  x 4

M6x20 Button Head Screws:  x 3

M5x25 Socket Head Screws:  x 4

Sensor Flag:  x 1

Flag Spacer:  x 1

Spacers:  x 2

Tools:

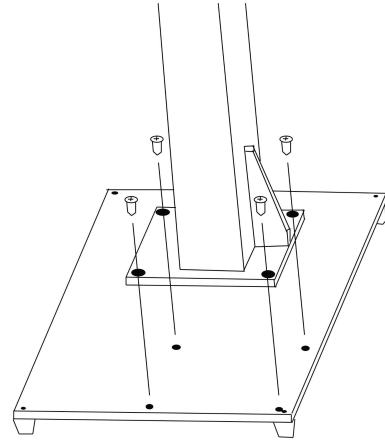
2.5 mm Hex Key

4mm Hex Key

5mm Hex Key


Phillips Screwdriver

Fig. 1



Note: Tool Not Provided!

2. Use the 8 x 16 screws to fasten the base to the stage. (See Fig.1)
3. The next step will require these items.

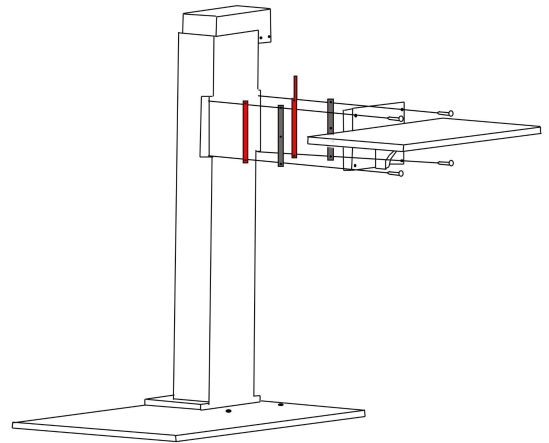
Hardware: Flag Spacer  x 1

Sensor flag  x 1

Spacer  x 2

M5x25 screws  x 4

Fig. 2



4. The mounting plate will be attached to the side of the stage. The flag spacer and the sensor flag are attached with the flag pointing upward. (See Fig.2)
5. Place the source onto the mount and secure using the 6 x 20 screws.

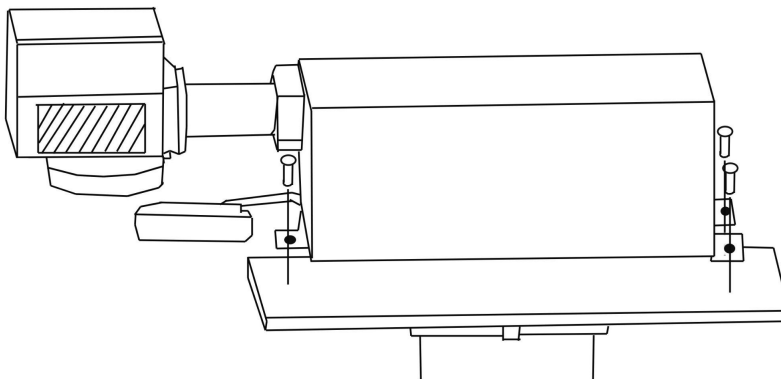


Fig. 3

6. The wire loom has 2 wires that will connect to the 2 ports found behind the source.(see Fig. 4)

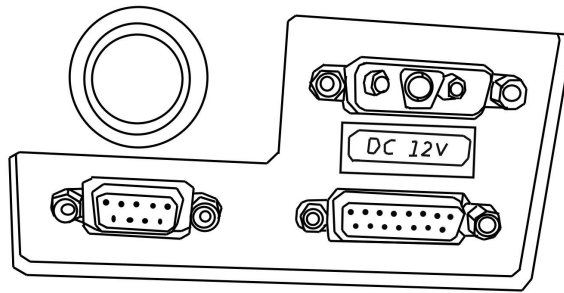


Fig. 4

7. Secure the connection using a phillips screwdriver.

8. The last wire on the loom will connect to the port under the scan head.

9. Next, we will connect the camera using the Type-C cord provided.

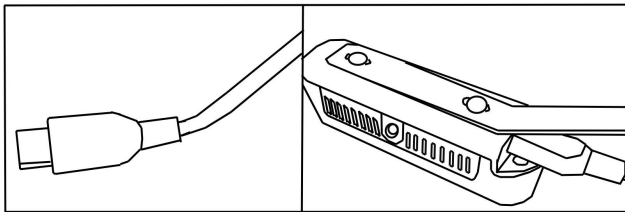
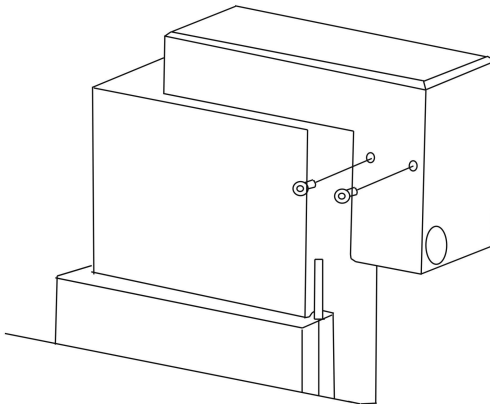


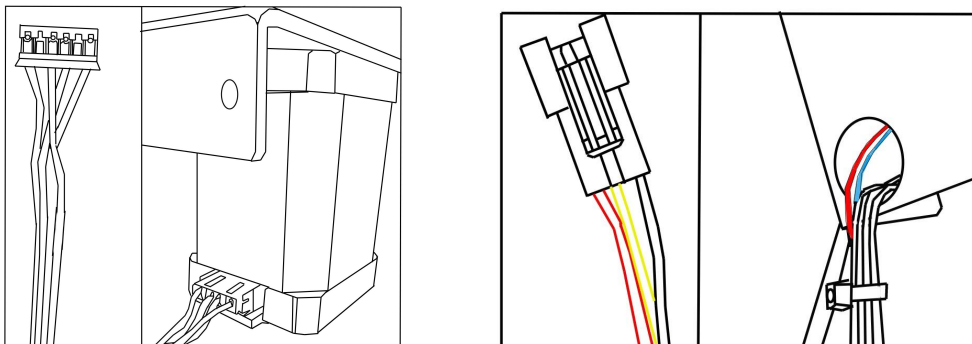
Fig. 6

10. In order to connect some cable to the laser we need to remove the cover head use the 2.5mm hex key.(see Fig. 7)

Fig. 7



11. Attach the motor wire to the motor.(see Fig. 8) & The sensory wire to the white wire(see Fig.9).



12. Replace the coverhead. Your UV is now ready for use.