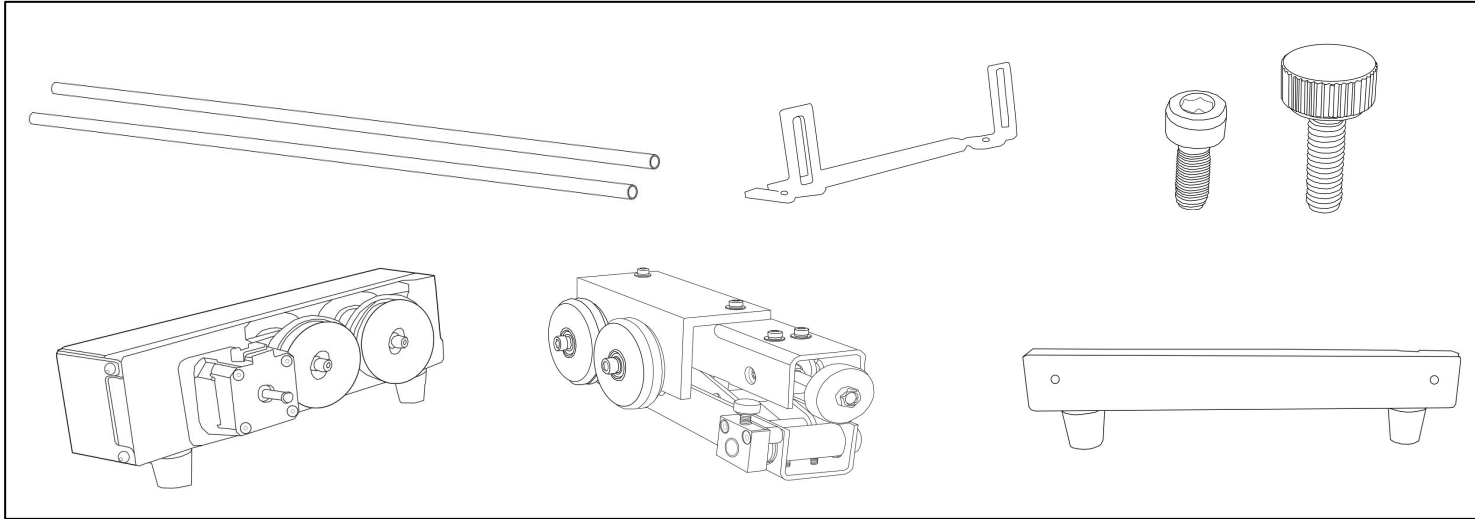
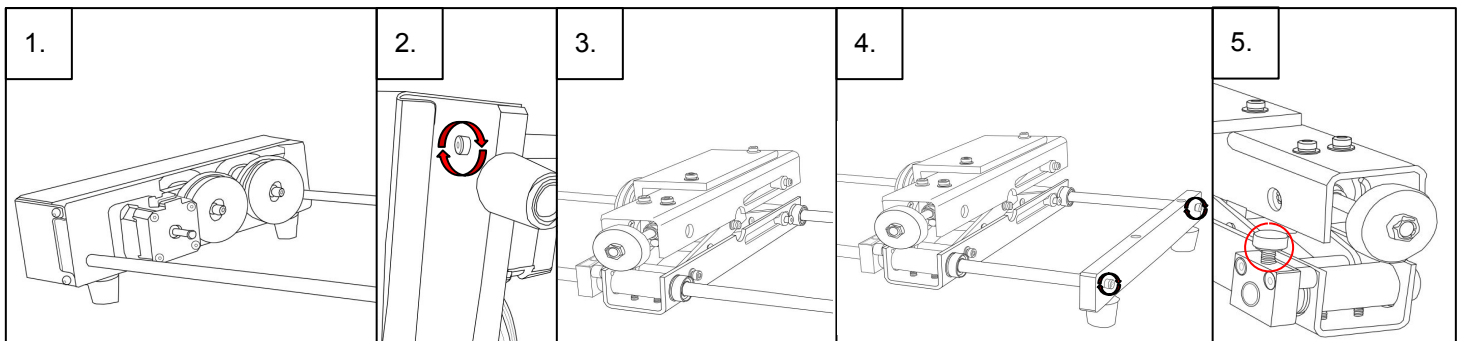


# FRICITION ROTARY ASSEMBLY

## Parts:



## Assembly:



1. Attach the rods onto the Rotary plate one at a time.
2. Manually tighten the M4 screws provided, adjusting rotary as needed.
3. Slide the Jack plate onto the rods.
4. Attach the legs to the rods and tighten with a 3mm hex key.
5. Manually screw in the Position screw. This screw is used to adjust the rotary, do not over tighten.