

# FSL 100

## USER MANUAL



## Safety Warning:

Please follow the manufacturer's instructions for proper use of this unit. If you have any questions, contact the manufacturer for assistance.

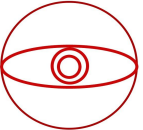


- Prior to servicing or cleaning the unit, make sure to switch off the power at the control panel and lock the service disconnecting means to prevent accidental power activation. If locking is not possible, use a prominent warning device, such as a tag, on the service panel.



- Wear appropriate protective clothing and safety glasses when operating or servicing the fume collector.

- Use proper lifting and rigging equipment for installation.



- Always replace all access panels before operating the unit.

- Electrical connections should only be made by qualified personnel, in compliance with local and national codes, and other relevant regulations.



- Keep flammable materials and vapors, such as gasoline, away from the weld fume collector.

Looking for financing or eager to buy, contact Sales:



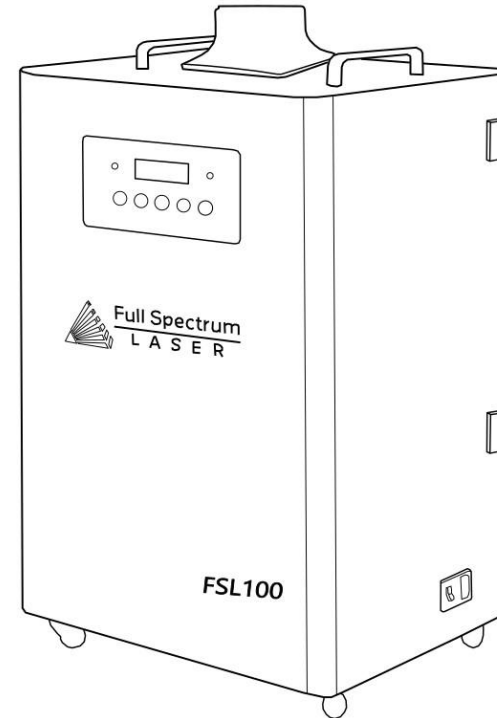
M-F 8AM-5PM PST  
[sales@fslaser.com](mailto:sales@fslaser.com)  
702-802-3101

Need help, visit us at our [Help Center](#) or contact Support:



M-F 8AM-5PM PST  
[support@fslaser.com](mailto:support@fslaser.com)  
702-802-3103

## Model Specifications:



|                           |                 |
|---------------------------|-----------------|
| <b>Air Intake Size:</b>   | 4" duct         |
| <b>Input Voltage:</b>     | AC110V          |
| <b>Maximum Power:</b>     | 200W            |
| <b>Noise:</b>             | <60 dB          |
| <b>Typical Flow Rate:</b> | 210 CFM         |
| <b>Dimensions:</b>        | 17" x 10" x 16" |
| <b>Weight:</b>            | 31 lbs          |

## Filter Installation:

Filters are installed in the following order:

Active Carbon Filter  
HEPA Filter  
Pre-Filter

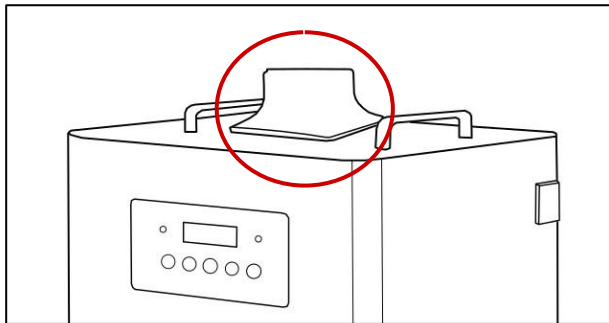
### Maintaining Filters:

**Pre-Filters:** Clean often using a shop vacuum. Check weekly, especially if cutting a lot of wood. When about 70% of accumulated debris remains after cleaning, replace.

**HEPA Filters:** Clean immediately when suction seems reduced, using the shop vacuum. When cleaning does not return optimal suction power, it is time to replace it.

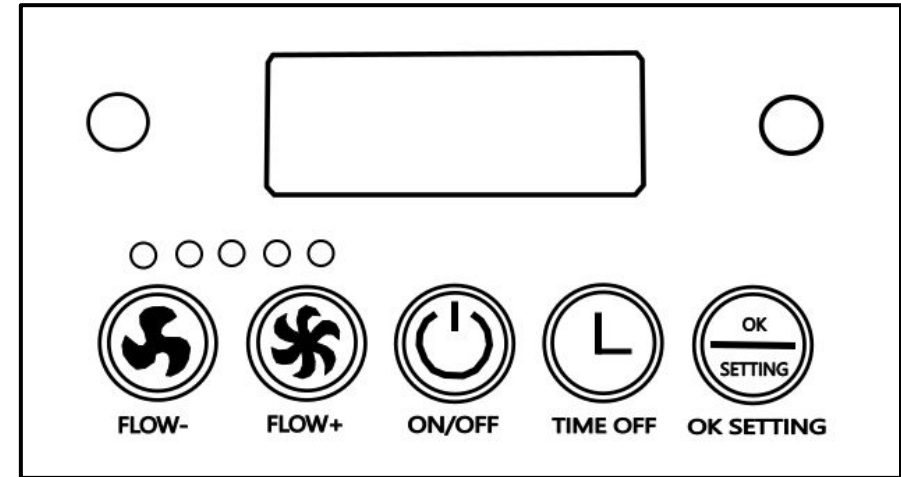
**Activated Carbon Filters:** Clean when odors are detected or suction is reduced. Shake to remove excess dust and debris before proceeding with the shop vacuum. When cleaning no longer eliminates detectable odors, replace Activated Carbon Filters.

## Ducting Installation:



1. Pull out the ducting tube.
2. Install one end of the ducting onto the top of the Fume Extractor.
3. Install the other end onto the machines exhaust.

## Control Panel:



### Flow+ / Flow- Button:

Press this button while the machine is running to increase the fan speed. The number on the digital display will increase in multiples of 10, with a maximum number of 100 indicating the machine is running at full speed. The fan speed should be set to effectively remove smoke. If there is lingering smoke during cutting, increase the fan speed. However, setting the fan speed too high may cause the material to lift up and be pulled toward the created vacuum.

### Time Set Button:

While the machine is running, press the Timer Set button. The digital display will show HXXX, where H represents the countdown in hours. The time can be set to a maximum of 300 hours and a minimum of 1 hour. The Flow+/Flow- buttons can be used to adjust the shutdown timing, then press the Timer Set button again, and start the countdown timer.

For example, H005 represents that the machine will shut down automatically in 5 hours. This function is useful at the end of the day when you want to turn off the laser but continue cleaning any remaining smell residues inside the machine.

### Ok/Setting Button:

If the machine is in alarm status and the buzzer sounds, press the Ok/Setting button to turn off the alarm. If the machine is not in alarm status, press the button to check the total working hours of the machine.

## Troubleshooting:

**Q: My machine works but the airflow is weak and suction power is significantly reduced. What is the issue?**

A: The cause may be a blocked air inlet or foreign object in the duct. To resolve the issue, turn off the power, open the top cover, and check for any obstructions in the air inlet or the air vent.

Another cause could be a saturated or blocked filter triggering an alarm. If the suction power of the empty-loaded machine is normal, it may indicate that the filter needs to be replaced.

**Q: The machine shuts down automatically shortly after starting. I restarted it but nothing changed. What could be wrong?**

A: The cause may be an obstruction in the airflow through the machine, causing the fan's starting current to be too high and triggering an automatic shutdown for self-protection. Try turning off the power, open the top cover, and check for any obstructions in the air inlet or consider replacing the filters.

**Q: The power switch is ON, but the machine does not run. Why is it not working?**

A: Does the power indicator light up? If it does not, then the cause may be a faulty fuse. You can replace the fuse by popping it out from the power socket using a flat head screwdriver and installing a new one.

If your having an issue not listed here, visit our [Help Center](#). We provides comprehensive videos, and useful resources for troubleshooting to helping you get the most out of your investment in our products.

## Support:

We offer a variety of free projects to help you get started, just check out our [Free Projects](#) page.

For more information on laser engraving, check out our [Blog](#) .

Financing:  
We work to provide a perfect option for any budget.

For more information contact sales:



M-F 8AM-5PM PST  
[sales@fslaser.com](mailto:sales@fslaser.com)  
702-802-3101



M-F 8AM-5PM PST  
[support@fslaser.com](mailto:support@fslaser.com)  
702-802-3103

Technical Support:  
Are you having an issue not found in the Help Center?

Contact support:

### Contact Information:

Phone: (702) 802 - 3100  
Fax: (702) 987 - 0150

6216 S Sandhill Rd.  
Las Vegas, NV 89120

Sign into our website to check your order status or email us.

Shipping: [shipping@fslaser.com](mailto:shipping@fslaser.com)  
Accounting: [accounting@fslaser.com](mailto:accounting@fslaser.com)